



Model Micro1000 Pressure Transducer

- Output Signal: mV, 4-20 mA
- 0.5% BFSL (Standard), 0.2% BFSL, 0.1% BFSL (Optional)
- Outside Diameter - 3mm to 12mm
- Standard ranges from 0-0.01 Bar to 0-600 Bar
- Micromachine Finish
- Overall Length – 25 mm or less

FEATURES:

Micromachined Finish

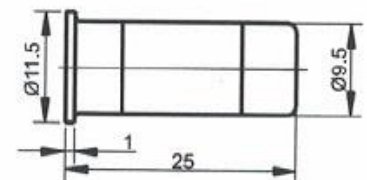
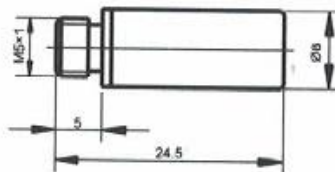
High Accuracy, High Stability, High Reliability

Wide pressure range

Excellent long-term Stability



REFERENCE DIMENSIONS:



Spectre Corp
7912 Root Road
Suite C/D
North Ridgeville, Ohio 44039



www.SpectreCorp.com
Phone: (440) 250-0616
Fax: (440) 353-0269
E-Mail: info@spectresensors.com



Model Micro1000 Pressure Transducer

Ordering Guide: Micro1000-C-(0-300Bar)-2--5-ECX

A	(0-300)	4	5	EC1
PRESSURE PORT	RANGE ¹	TYPE	ACCURACY (BFSL)	CONNECTOR ²
C = OTHER	PSI	1 = ABSOLUTE	5 = 0.5%	ECX = OTHER
	BAR	2 = GAUGE	25 = 0.25%	
	kPA	3 = VACUUM	1 – 0.1% BFSL	
		4 = SEALED		

TYPICAL APPLICATIONS	
Laboratory/Research	Oil/Gas
Construction	Rocket/Jet Engine Testing
Diesel-Internal Combustion	Military
Geological Testing	Hydraulic Power Generation

SPECIFICATIONS

Media Compatibility	Gas/Liquid Compatible with wetted materials
Pressure Range	0-0.1 Bar to 0-600 Bar
Overpressure	150% FS
Output Signal	≥70mV
Zero Offset	≤ 2mv
Excitation	1.5 mA or 10VDC
Long-Term Stability	<0.5% FS/Year
Compensated Temperature Range	0 to 70°C
Storage Temperature Range	-40 to 100°C
Operating Temperature Range	-10 to 80°C
Housing Material	316 Stainless Steel
Temperature Coefficient of Zero	0.3% FS/10°C
Temperature Coefficient of Span	0.3% FS/10°C
Input/output Resistance	1-6kΩ
Insulation Resistance	100MΩ@50VDC

